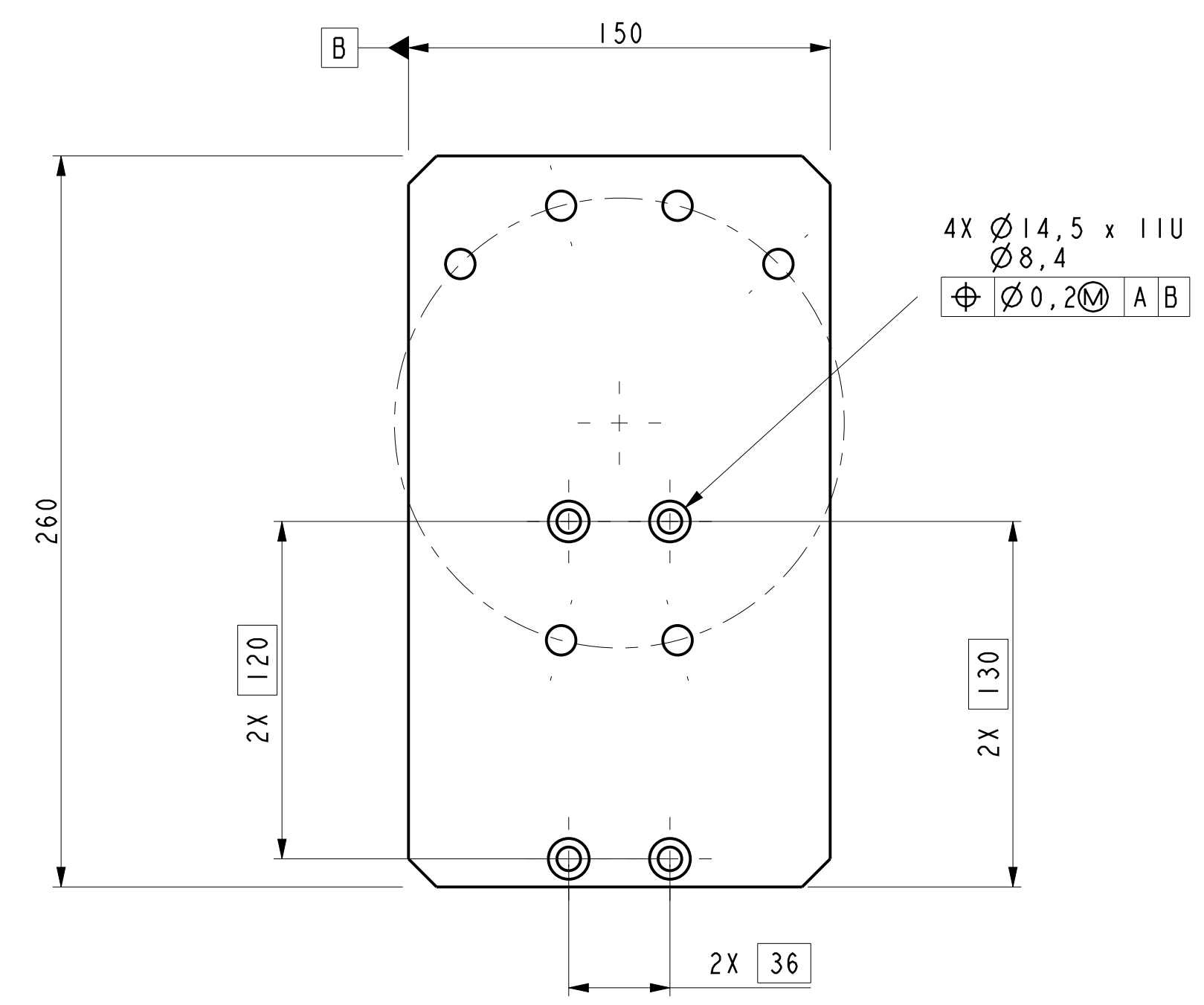
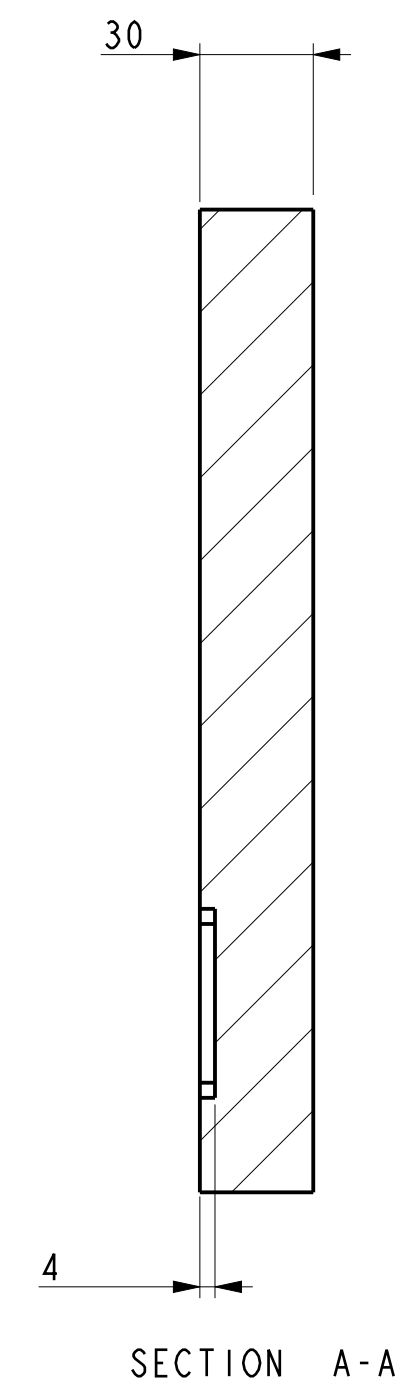
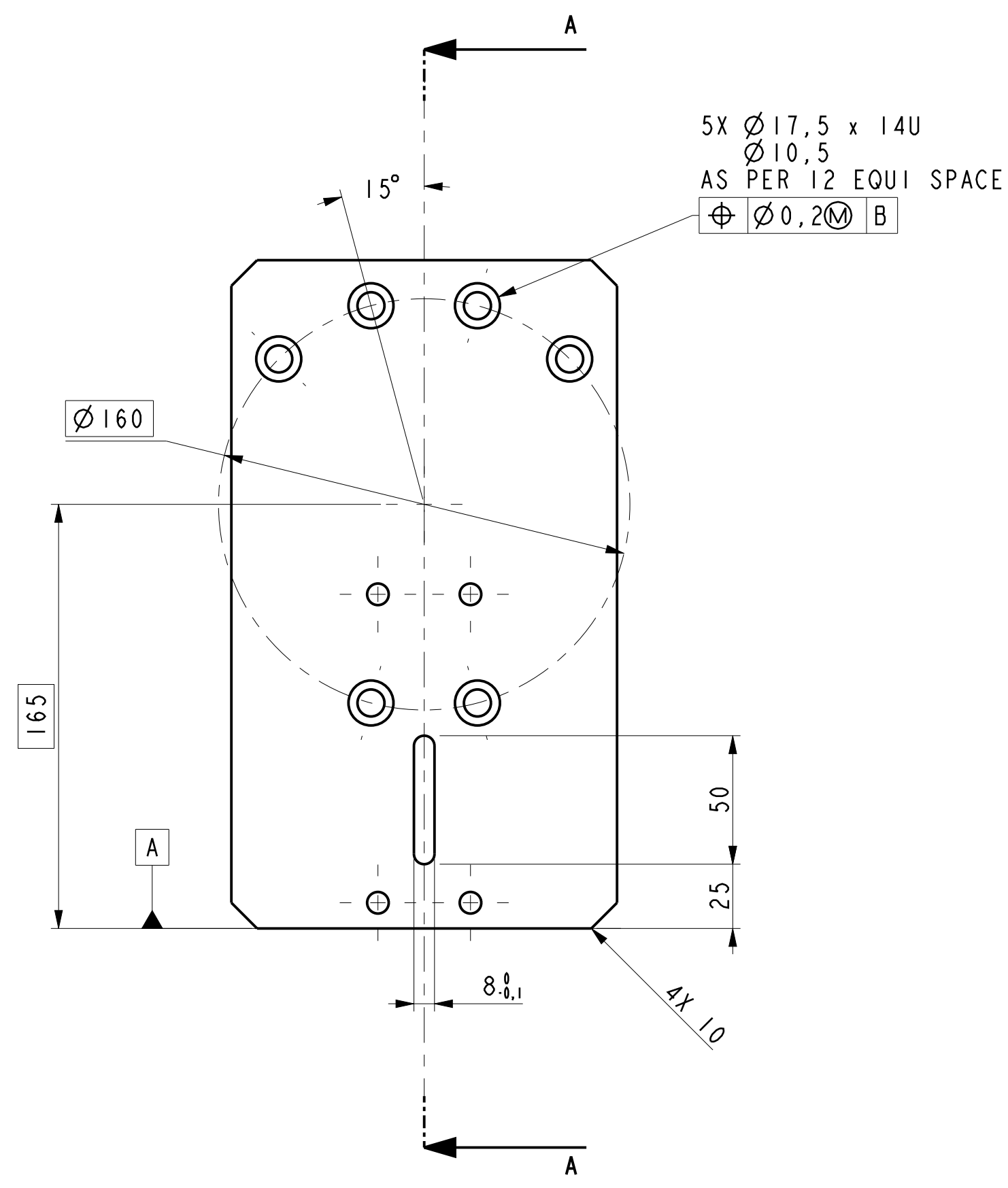


CONFIDENTIAL. DO NOT DISCLOSE, USE, OR REPRODUCE WITHOUT WRITTEN PERMISSION OF EMVIO ENGINEERING



| | | | | | | | |
|---|--|--------------|-------------|--------------|----------|----------------------|-------------------------------|
| ADAPTER PLATE. 20K RPM SPINDLE TO 5.1 SIGMA PLATE | | | | | | MATERIAL | 5000 SERIES ALU TOOLING PLATE |
| | | | | | | FINISH | |
| | | | | | | COATING OR TREATMENT | |
| FORMAT A2 | | SCALE 1/2 | UNITS mm | SP_AD_SIGMA5 | REVISION | PAGE 1/1 | |

| | | |
|--|-----------------|--|
| UNLESS OTHERWISE STATED: | | |
| INSIDE CORNERS: R0.25 ± 0.1 DEBUR AND BREAK SHARP EDGES TO R OR CH 0.1-0.3 | | |
| SURFACE FINISHES MACHINED SURFACES: 1.6 | | |
| TOLERANCES ANGULAR TOLERANCES: ISO 2768-c LINEAR/GEOMETRIC TOLERANCES: ISO 2768-mk | | |
| EMVIO ENGINEERING A DEPARTMENT OF EMVIO ENTERPRISES LTD | | |
| ENGINEER | GKONSTANTINIDIS | |
| DESIGNER | GKONSTANTINIDIS | |