

CONFIDENTIAL. DO NOT DISCLOSE, USE, OR REPRODUCE WITHOUT WRITTEN PERMISSION OF EMVIO ENGINEERING

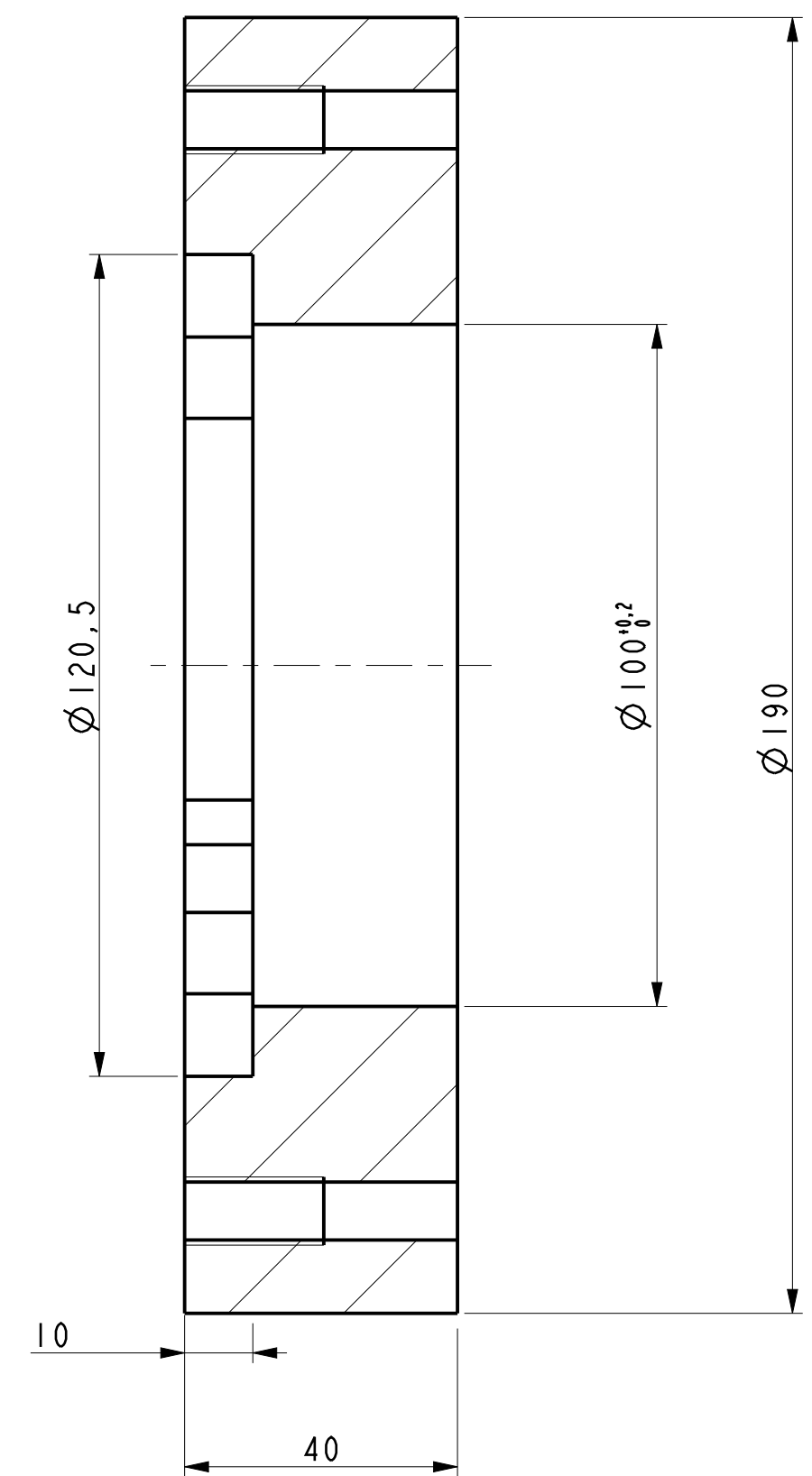
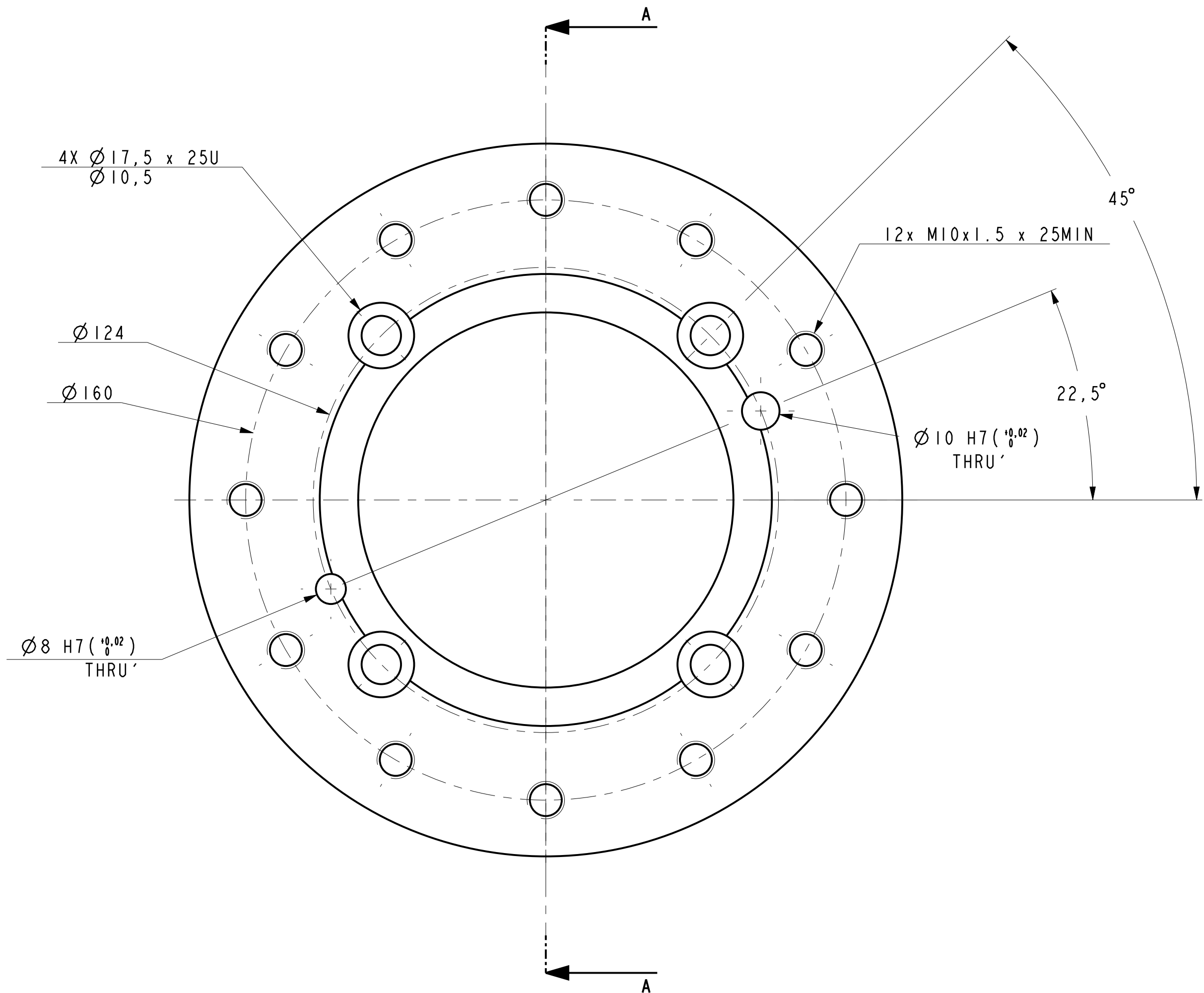


ABB SENSOR 2500 TO AR-SIGMA 5.1 ADAPTOR						MATERIAL	5000 SERIES ALU TOOLING PLATE
						FINISH	N/A
						COATING OR TREATMENT	N/A

	FORMAT A2	SCALE 1,000	UNITS mm	TC-SENS2500-ADP	REVISION AA	PAGE 1/1
--	--------------	----------------	-------------	-----------------	----------------	-------------

UNLESS OTHERWISE STATED:		
INSIDE CORNERS: R0.25 ± 0.1 DEBUR AND BREAK SHARP EDGES TO R OR CH 0.1-0.3		
SURFACE FINISHES MACHINED SURFACES: 1.6		
TOLERANCES ANGULAR TOLERANCES: ISO 2768-c LINEAR/GEOMETRIC TOLERANCES: ISO 2768-mK		
 A DEPARTMENT OF EMVIO ENTERPRISES LTD		
ENGINEER	GKONSTANTINIDIS	06-NOV-2018
DESIGNER	GKONSTANTINIDIS	06-NOV-2018